

RX 60 Technical Data Electric Forklift Truck

[RX 60-25](#)

[RX 60-25/600](#)

[RX 60-25L](#)

[RX 60-25L/600](#)

[RX 60-30](#)

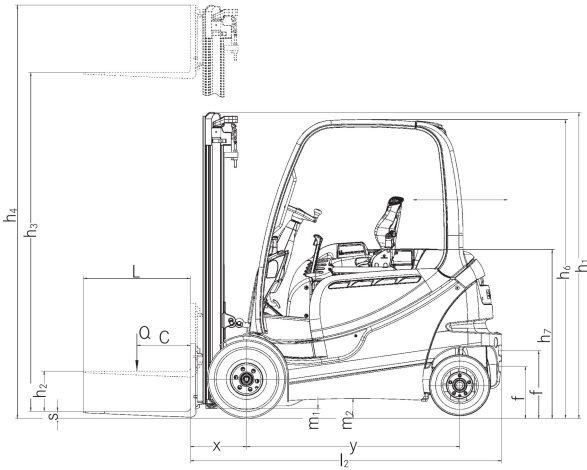
[RX 60-30L](#)

[RX 60-30L/600](#)

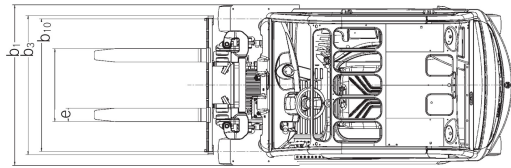
[RX 60-35](#)



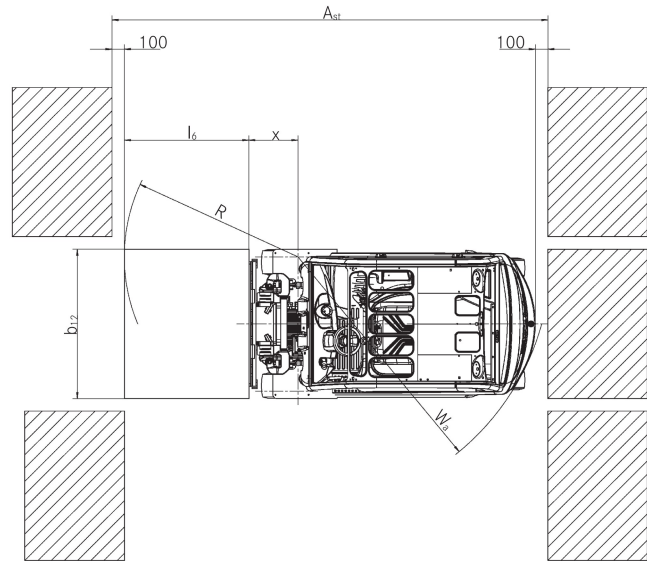
RX 60 Electric Forklift Truck
 Technical Drawings



Side view



Top view

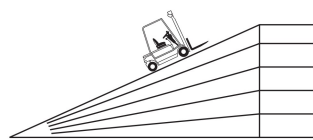


Top view

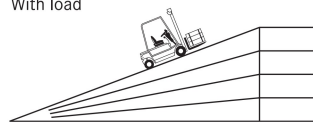
Inclines: maximum distance that can be driven in 60 minutes.

Example: with a load of 2500 kg and an incline of 10%, an RX 60-25 can drive a distance of 600 m up to ten times per hour.

Without load



With load



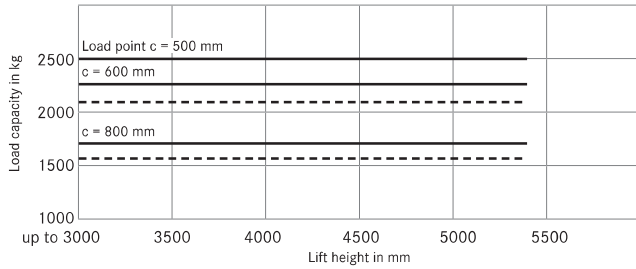
	RX 60-25	RX 60-25L	RX 60-30	RX 60-30L	RX 60-35	RX 60-25/600	RX 60-25L/600	RX 60-30/600
25%	3770	3320	3020	3020	2120	3380	3320	2480
20%	5340	5110	5030	5030	4090	5120	5110	4430
15%	6480	6180	5990	5990	5810	6180	6180	5920
10%	8280	7900	7710	7890	7260	7910	7900	7450
5%	12400	11480	11690	11680	10880	11900	11480	10980
Without load								
20%	2670	1790	1400	1400	-	2160	1790	1120
15%	4590	3740	2940	2940	2090	4180	3740	2560
10%	6000	5790	5450	5450	5040	5860	5790	5270
5%	8950	8600	8200	8200	7570	8640	8600	7880

(Dry rough concrete = coefficient of friction 0.8)
 (Battery: standard as per specification sheet)

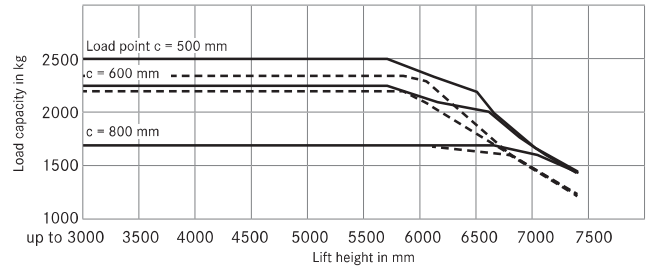
RX 60 Electric Forklift Truck

Basic Load Capacities

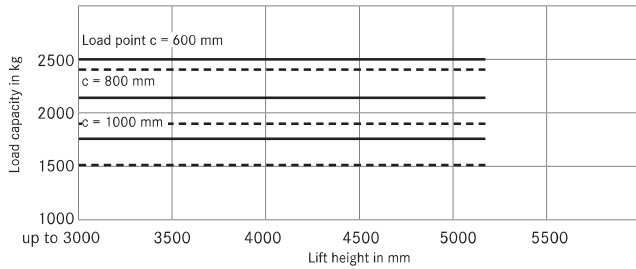
Load capacity RX 60-25 duplex mast



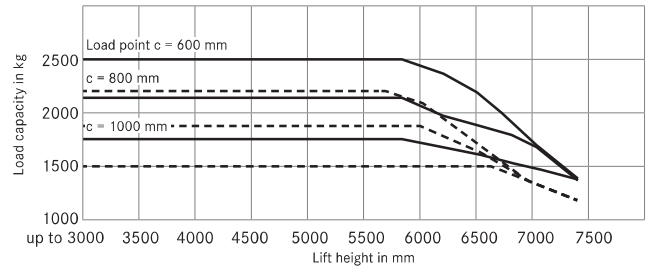
Load capacity RX 60-25 triplex mast



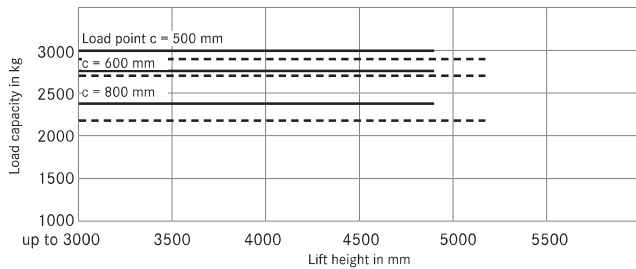
Load capacity RX 60-25/600 duplex mast



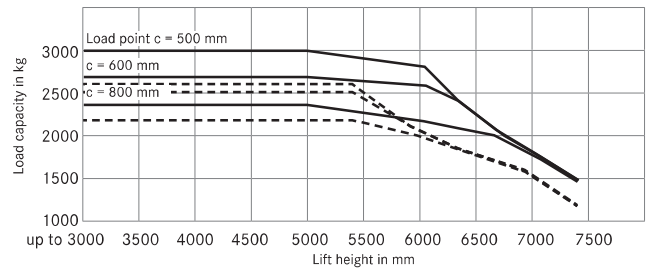
Load capacity RX 60-25/600 triplex mast



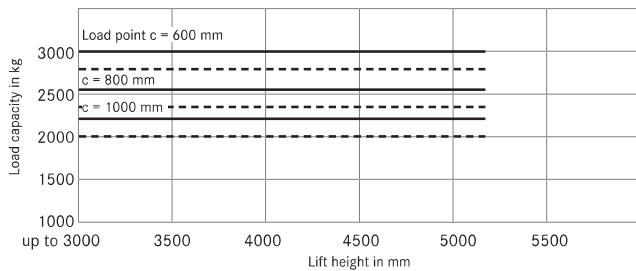
Load capacity RX 60-30L duplex mast



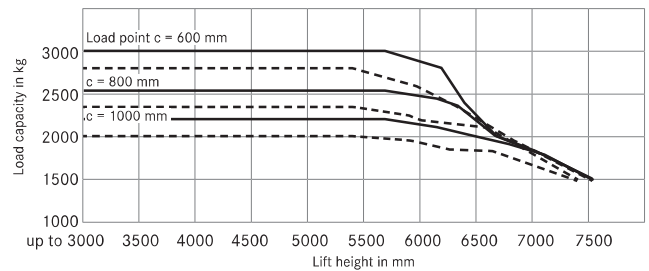
Load capacity RX 60-25/600 triplex mast



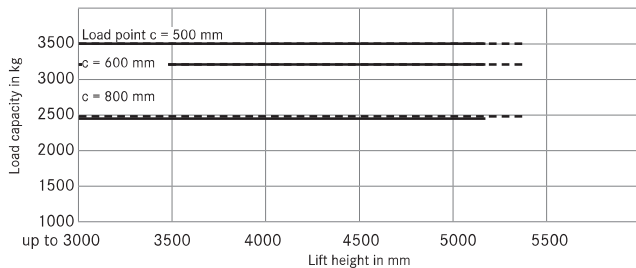
Load capacity RX 60-30/600 duplex mast



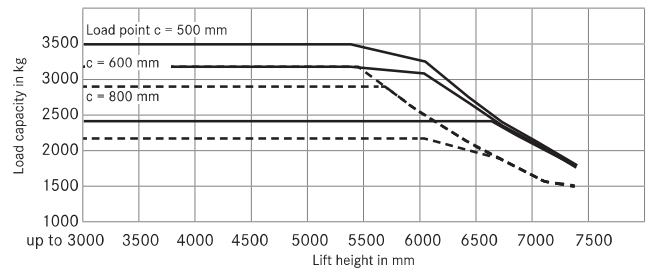
Load capacity RX 60-30/600 triplex mast



Load capacity RX 60-35 duplex mast



Load capacity RX 60-35 triplex mast



— without side shifter - - - with fitted side shifter